

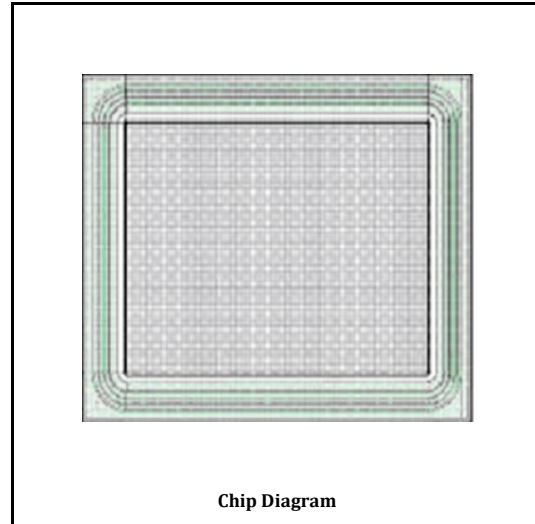
PRODUCT FEATURES

- ◆ Ultrafast Recovery Time
- ◆ Soft Recovery Characteristics
- ◆ Low Forward Voltage
- ◆ Low Leakage Current
- ◆ Low Recovery Loss

Applications (not limited to)

- ◆ Freewheeling, Snubber, Clamp
- ◆ Snubber Diode
- ◆ Switch Power Supplies
- ◆ Motor control
- ◆ Inverters, Converters

Items	Description
Wafer Size	5 Inch
Gross Die	2250 EA
Top Metal	Al
Back Metal	Ag
Dimensions	um
Chip Size	2200um * 2200um
Pad Size	1660um * 1660um
Wafer Thickness	260±20um
Scribe Line width	50 um
Bonding Wire	Al, 15mil*1



Absolute Maximum ratings (T_a=25°C)

Parameter	Symbol	Value	Units
DC Blocking Voltage	V _{RRM}	400	V
Average Rectified Forward Current	I _{FAV}	15	A
Nonrepetitive Peak Surge Current@8.3mS	I _{FSM}	150	A
Operating Junction Temperature	T _j	175	°C
Storage Temperature	T _{STG}	- 55~150	°C

Electrical specification (T_a=25°C)

Parameter	Symbol	Test Conditions	Min	Max	Typ	Units
Reverse Breakdown Voltage	V _{BR}	I _R =50μA	420	-	460	V
Forward Voltage	V _F	I _F =15A, T _a =25°C	-	1.35	1.15	V
		I _F =15A, T _a =125°C	-	1.25	1.00	V
Reverse Leakage Current	I _R	V _R =400V, T _a =25°C	-	2	-	μA
		V _R =400V, T _a =125°C	-	-	2	μA
Reverse Recovery Time	T _{rr}	I _F =0.5A, I _R =1A, I _{rr} =0.25A	-	35	22	ns
		I _F =1A, V _R =30V, di/dt=-200A/us	-	-	22	ns

Remark:

- 1.Customer should obtain the latest version of datasheet before placing order, and verify the relevant information.
- 2.Cutting damage and chipping area can't beyond scribe line in given size range.
- 3.Testing system of T_{rr} could be different, customer might take secondary test to evaluate if necessary.
- 4.Customer might choose the bonding wire material and diameter according to actual situation .while no less than our recommendation.